

Violine II

1. Sinfonie (1986)

Friedrich Radermacher

Allegro
♩ = 120

7 *f* *f* *p* *mf* *rit.*

12 *f* *a tempo*

15 *p*

19

24 *p* *pp*

30

36 *f*

40 *p*

44 *f*

49 *ff*

52 poco rit. . **A** a tempo *p*

58 *pp*

62 *p* 3 3

72 *ff*

76

79

82 **B** *pp*

89 *p* 2

96 *mf* *f*

101

ff *pp*

106

p

112

ff *pp* *dim.*

118

mf

123

rit.

128

f

134 **C** a tempo

ppp *p*

139 poco rit. - - - - -

143 **D** a tempo

mf

148

153

159 *ff* *mf* *p* pizz. *p*

164

168 arco solo *pp*

173 **E** arco tutti sul pont. *pp* *p*

178 *f* *ff*

182

185

div.

2. Satz

Poco adagio

♩ = 68
con sord.

p

197

205

p

212

pp

220

p

227

mf

235

p pizz.

243

pp Più mosso

4

248 arco senza sord.

pp *p* *p*

256

263 **H** *mf*

270

278 *ff*

287

294 *ff* *mf* rit. **2**

302 **I** Tempo 1 *p*

310 *pp* sul pont.

316 **3** pizz. *mf* poco rit.

Detailed description of the musical score: The score is for Violine II, measures 248 to 316. It is in G major (one sharp) and 4/4 time. Measures 248-255: Measure 248 starts with a half note G4, followed by a whole rest. Measure 249 is a whole rest. Measure 250 has a quarter note G4, quarter note A4, and a half note B4. Measure 251 has a quarter note B4, quarter note A4, and a half note G4. Measure 252 is a whole rest. Measure 253 has a quarter note G4, quarter note A4, and a half note B4. Measure 254 has a quarter note B4, quarter note A4, and a half note G4. Measure 255 has a quarter note G4, quarter note A4, and a half note B4. Measure 256-262: A series of eighth notes, mostly beamed in pairs, with some triplets. Measure 263: A half note G4, followed by a half note A4, and a half note B4. Measure 264-269: A series of eighth notes, mostly beamed in pairs. Measure 270-277: A series of eighth notes, mostly beamed in pairs. Measure 278: A triplet of eighth notes (G4, A4, B4), followed by a quarter note C5, and a half note B4. Measure 279-286: A series of eighth notes, mostly beamed in pairs. Measure 287: A quarter note G4, quarter note A4, and a half note B4. Measure 288-293: A series of eighth notes, mostly beamed in pairs. Measure 294: A quarter note G4, quarter note A4, and a half note B4. Measure 295-299: A series of eighth notes, mostly beamed in pairs. Measure 300: A quarter note G4, quarter note A4, and a half note B4. Measure 301: A quarter note G4, quarter note A4, and a half note B4. Measure 302: A quarter note G4, quarter note A4, and a half note B4. Measure 303-309: A series of eighth notes, mostly beamed in pairs. Measure 310: A quarter note G4, quarter note A4, and a half note B4. Measure 311-315: A series of eighth notes, mostly beamed in pairs. Measure 316: A quarter note G4, quarter note A4, and a half note B4.

324 **a tempo**
arco con sord.
p

333 *pp*

342 pizz.

348 arco
p *pp*

3. Satz

Allegro moderato

♩ = 138

pizz. 6 arco
p *p*

7

11 a2
p

15 *f*

19 *p*

24 pizz.

29 arco
mf *ff*

35 *p* *mf* *f*

39

42 *ff*

47 *p* *p*

53 pizz.

59 arco *ff*

64 *p* *mf* *f*

67

70 *ff*

Detailed description of the musical score: The score is for Violine II, measures 29 to 70. It is in G major (one sharp) and 4/4 time. Measure 29 starts with 'arco' and 'mf', followed by a series of eighth and sixteenth notes. Measure 35 has dynamics 'p', 'mf', and 'f'. Measure 39 continues the melodic line. Measure 42 features triplets and 'ff'. Measure 47 has a key signature change 'K' and dynamics 'p'. Measure 53 includes 'pizz.' and triplets. Measure 59 has 'arco' and 'ff'. Measure 64 has dynamics 'p', 'mf', and 'f'. Measure 67 continues the melodic line. Measure 70 has 'ff' and ends with a fermata.

75 **L**

p

81 **5**

pp

91

97

103 *mf*

109 **M**

mf

3

mf

117 **3**

gliss.

124 *mf*

pp

130

134 *f*

5

142 **N** *p* pizz. arco

147

151 *p* *p* *mf* pizz.

157 arco *f* 3 3 3 3

162 *mp* *ff*

165 *p* *mf*

169 *f*

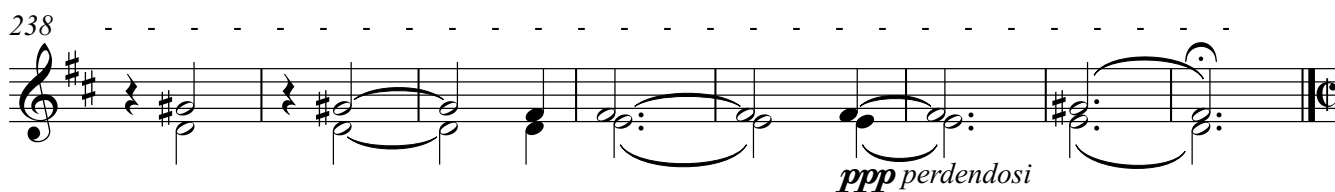
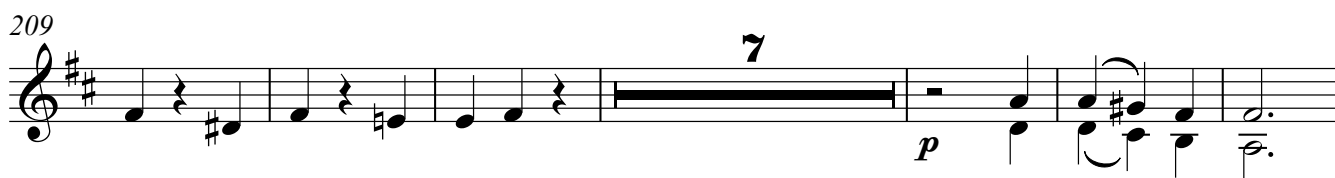
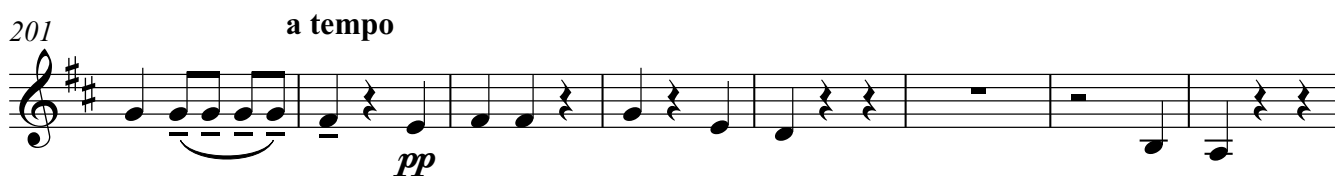
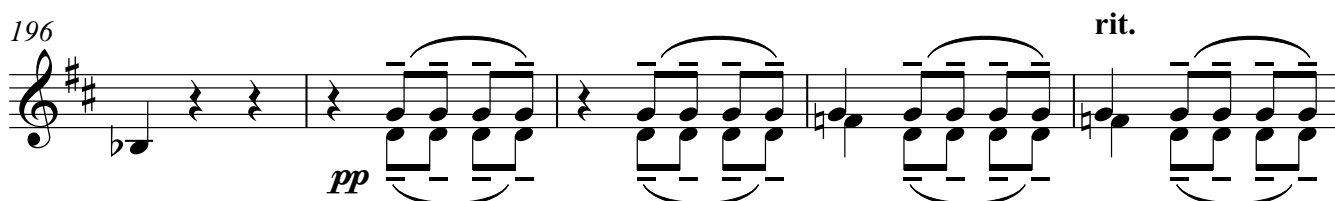
172 3 3 *ff* 3

175 rit.

Violine II
4.Satz

11

Adagio
♩ = 72



5. Satz

Allegro con brio

♩ = 140 1

3

ff

4

3

p

9

gliss.

15

f

21

3

p

28

pizz.

ff

O

arco

p

33

pizz.

sfz

38

42

arco

mf

f

46

2

f

f

ff

3

52 **P**

56 *p* *f*

62 *sfz* *sfz*

68 *ff* *sfz* *p* *mf*

74 *ff* *ff* *pizz.* *arco* *p*

80 **Q** *p*

88 *mf*

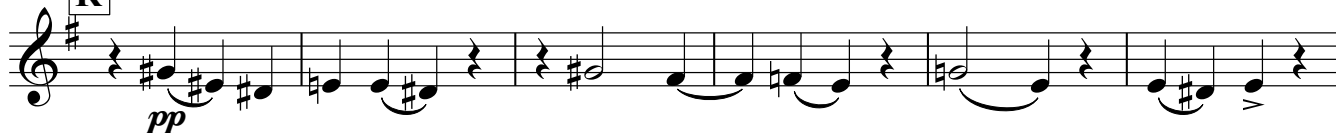
92 *f* *p*

96 *p* **2**

101



106

R

112

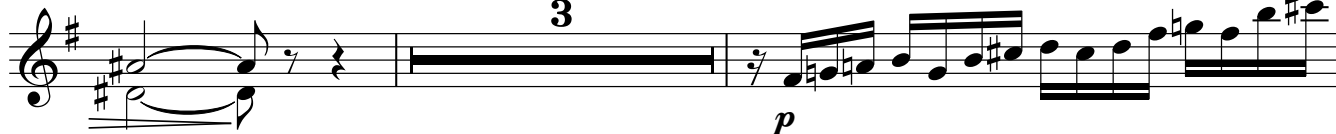


116



121

3



126

pizz.



130

S

arco



135



139



143

5



152

Musical notation for measure 152, featuring a treble clef, a key signature of one sharp (F#), and a 3/4 time signature. The measure contains a series of eighth and sixteenth notes, including triplets and slurs, with a final quarter rest.

156 T

ff *mf*

162

pizz.

mf

167

arco

ff

ff

ff

ff

171

Musical notation for measure 171, featuring a treble clef, a key signature of one sharp (F#), and a sequence of eighth and quarter notes with slurs and ties.

176

fff

181

f *ff* 2

187

ff

191

27'46.8"